



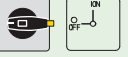

# Disconnect Switches

Main Switches Enclosed Switches – Mild Steel Enclosure


## Main Switches

- Enclosed switches with mild steel enclosure (powder coated – RAL 7035)
- Cover interlock in ON position
- 3 up to 8 pole
- 20 A up to 315 A
- IP66



Switching programme	Rated data (IEC 60947)			Enclosure dimension (H × W × D) (mm)	Padlock device N-handle black	Padlock device M-handle black	Padlockable handle V-handle silver/black
	Operat. current I <sub>e</sub> (A)	Operational power (at 380–440 V) (kW)			 IP66	 IP66	 IP66
	AC-21A (A)	AC-23A (kW)	AC-3 (kW)		Order code number	Order code number	Order code number
<b>41300</b> – 3 pole – without auxiliary contacts 	20	5.5	3.7	150 × 150 × 120	<b>H216-41300-087N1</b>	<b>H216-41300-087M1</b>	<b>H216-41300-087V1</b>
	20	5.5	3.7	200 × 150 × 120	<b>H216-41300-187N1</b>	<b>H216-41300-187M1</b>	<b>H216-41300-187V1</b>
	25	7.5	5.5	150 × 150 × 120	<b>H220-41300-087N1</b>	<b>H220-41300-087M1</b>	<b>H220-41300-087V1</b>
	25	7.5	5.5	200 × 150 × 120	<b>H220-41300-187N1</b>	<b>H220-41300-187M1</b>	<b>H220-41300-187V1</b>
	32	11	7.5	150 × 150 × 120	<b>H226-41300-087N1</b>	<b>H226-41300-087M1</b>	<b>H226-41300-087V1</b>
	32	11	7.5	200 × 150 × 120	<b>H226-41300-187N1</b>	<b>H226-41300-187M1</b>	<b>H226-41300-187V1</b>
	40	15	11	200 × 150 × 120	<b>H233-41300-187N1</b>	<b>H233-41300-187M1</b>	<b>H233-41300-187V1</b>
	40	15	11	200 × 150 × 120	<b>B240-41300-087N1*</b>	<b>B240-41300-087M1*</b>	<b>B240-41300-087V1*</b>
	50	18.5	15	200 × 150 × 120	<b>B250-41300-087N1</b>	<b>B250-41300-087M1</b>	<b>B250-41300-087V1</b>
	63	22	18.5	200 × 150 × 120	<b>B263-41300-087N1</b>	<b>B263-41300-087M1</b>	<b>B263-41300-087V1</b>
	63	22	18.5	200 × 150 × 120	<b>H406-41300-987N1*</b>	<b>H406-41300-987M1*</b>	–
	63	22	18.5	300 × 250 × 150	<b>H406-41300-187N1</b>	<b>H406-41300-187M1</b>	–
	63	22	18.5	400 × 300 × 155	<b>H406-41300-182N1<sup>1</sup></b>	<b>H406-41300-182M1<sup>1</sup></b>	–
	80	30	22	200 × 150 × 120	<b>H408-41300-987N1</b>	<b>H408-41300-987M1</b>	–
	80	30	22	300 × 250 × 150	<b>H408-41300-187N1</b>	<b>H408-41300-187M1</b>	–
	80	30	22	400 × 300 × 155	<b>H408-41300-182N1<sup>1</sup></b>	<b>H408-41300-182M1<sup>1</sup></b>	–
100	37	30	300 × 250 × 150	<b>H410-41300-187N1</b>	<b>H410-41300-187M1</b>	–	
100	37	30	400 × 300 × 155	<b>H410-41300-182N1<sup>1</sup></b>	<b>H410-41300-182M1<sup>1</sup></b>	–	
125	45	37	300 × 250 × 150	<b>H412-41300-187N1</b>	<b>H412-41300-187M1</b>	–	
125	45	37	400 × 300 × 155	<b>H412-41300-182N1<sup>1</sup></b>	<b>H412-41300-182M1<sup>1</sup></b>	–	

Rated data (IEC 60947)			Enclosure dimension (H × W × D) (mm)	Padlock device H-handle silver/black	
Operat. current I <sub>e</sub> (A)	Operational power (at 380–440 V) (kW)			 IP66	Order code number
160	75	45	500 × 400 × 300	<b>K616-41300-187H1<sup>1</sup></b>	
315	132	55	600 × 400 × 300	<b>K830-41300-187H1<sup>1</sup></b>	
315	132	55	800 × 400 × 300	<b>K830-41300-287H1<sup>1</sup></b>	

\* larger terminal capacity, see page 154



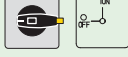
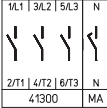
<sup>1</sup> hinged door

Further switching programmes from page 132.

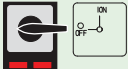
# Disconnect Switches



## Main Switches Enclosed Switches – Mild Steel Enclosure

Switching programme	Rated data (IEC 60947)			Enclosure dimension (H × W × D) (mm)	Padlock device N-handle black	Padlock device M-handle black	Padlockable handle V-handle silver/black
	Operat. current I <sub>e</sub>	Operational power (at 380–440 V)			 IP66	 IP66	 IP66
	AC-21A (A)	AC-23A (kW)	AC-3 (kW)		Order code number	Order code number	Order code number
<b>41400</b> – 4 pole – without auxiliary contacts – neutral contact – early make/late break  	20	5.5	3.7	150 × 150 × 120	<b>H216-41400-087N1</b>	<b>H216-41400-087M1</b>	<b>H216-41400-087V1</b>
	20	5.5	3.7	200 × 150 × 120	<b>H216-41400-187N1</b>	<b>H216-41400-187M1</b>	<b>H216-41400-187V1</b>
	25	7.5	5.5	150 × 150 × 120	<b>H220-41400-087N1</b>	<b>H220-41400-087M1</b>	<b>H220-41400-087V1</b>
	25	7.5	5.5	200 × 150 × 120	<b>H220-41400-187N1</b>	<b>H220-41400-187M1</b>	<b>H220-41400-187V1</b>
	32	11	7.5	150 × 150 × 120	<b>H226-41400-087N1</b>	<b>H226-41400-087M1</b>	<b>H226-41400-087V1</b>
	32	11	7.5	200 × 150 × 120	<b>H226-41400-187N1</b>	<b>H226-41400-187M1</b>	<b>H226-41400-187V1</b>
	40	15	11	200 × 150 × 120	<b>H233-41400-187N1</b>	<b>H233-41400-187M1</b>	<b>H233-41400-187V1</b>
	40	15	11	200 × 150 × 120	<b>B240-41400-087N1*</b>	<b>B240-41400-087M1*</b>	<b>B240-41400-087V1*</b>
	50	18.5	15	200 × 150 × 120	<b>B250-41400-087N1</b>	<b>B250-41400-087M1</b>	<b>B250-41400-087V1</b>
	63	22	18.5	200 × 150 × 120	<b>B263-41400-087N1</b>	<b>B263-41400-087M1</b>	<b>B263-41400-087V1</b>
	63	22	18.5	200 × 150 × 120	<b>H406-41400-987N1*</b>	<b>H406-41400-987M1*</b>	–
	63	22	18.5	300 × 250 × 150	<b>H406-41400-187N1</b>	<b>H406-41400-187M1</b>	–
	63	22	18.5	400 × 300 × 155	<b>H406-41400-182N1<sup>1</sup></b>	<b>H406-41400-182M1<sup>1</sup></b>	–
	80	30	22	200 × 150 × 120	<b>H408-41400-987N1</b>	<b>H408-41400-987M1</b>	–
	80	30	22	300 × 250 × 150	<b>H408-41400-187N1</b>	<b>H408-41400-187M1</b>	–
80	30	22	400 × 300 × 155	<b>H408-41400-182N1<sup>1</sup></b>	<b>H408-41400-182M1<sup>1</sup></b>	–	
100	37	30	300 × 250 × 150	<b>H410-41400-187N1</b>	<b>H410-41400-187M1</b>	–	
100	37	30	400 × 300 × 155	<b>H410-41400-182N1<sup>1</sup></b>	<b>H410-41400-182M1<sup>1</sup></b>	–	
125	45	37	300 × 250 × 150	<b>H412-41400-187N1</b>	<b>H412-41400-187M1</b>	–	
125	45	37	400 × 300 × 155	<b>H412-41400-182N1<sup>1</sup></b>	<b>H412-41400-182M1<sup>1</sup></b>	–	

Rated data (IEC 60947)			Enclosure dimension (H × W × D) (mm)	Padlock device H-handle silver/black
Operat. current I <sub>e</sub>	Operational power (at 380–440 V)			 IP66
AC-21A (A)	AC-23A (kW)	AC-3 (kW)		Order code number
160	75	45	500 × 400 × 300	<b>K616-41400-187H1<sup>1</sup></b>
315	132	55	600 × 400 × 300	<b>K830-41400-187H1<sup>1</sup></b>
315	132	55	800 × 400 × 300	<b>K830-41400-287H1<sup>1</sup></b>


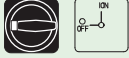
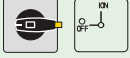
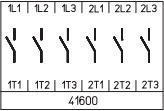
\* larger terminal capacity, see page 154

<sup>1</sup> hinged door

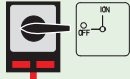
Further switching programmes from page 132.

# Disconnect Switches

## Main Switches Enclosed Switches – Mild Steel Enclosure

Switching programme	Rated data (IEC 60947)			Enclosure dimension (H × W × D) (mm)	Padlock device N-handle black	Padlock device M-handle black	Padlockable handle V-handle silver/black
	Operat. current I <sub>e</sub>	Operational power (at 380–440 V)			 IP66	 IP66	 IP66
	AC-21A (A)	AC-23A (kW)	AC-3 (kW)		Order code number	Order code number	Order code number
<b>41600</b> – 6 pole – without auxiliary contacts 	20	5.5	3.7	200 × 150 × 120	<b>H216-41600-187N1</b>	<b>H216-41600-187M1</b>	<b>H216-41600-187V1</b>
	25	7.5	5.5	200 × 150 × 120	<b>H220-41600-187N1</b>	<b>H220-41600-187M1</b>	<b>H220-41600-187V1</b>
	32	11	7.5	200 × 150 × 120	<b>H226-41600-187N1</b>	<b>H226-41600-187M1</b>	<b>H226-41600-187V1</b>
	40	15	11	200 × 150 × 120	<b>H233-41600-187N1</b>	<b>H233-41600-187M1</b>	<b>H233-41600-187V1</b>
	40	15	11	300 × 250 × 150	<b>B240-41600-187N1</b>	<b>B240-41600-187M1</b>	–
	50	18.5	15	300 × 250 × 150	<b>B250-41600-187N1</b>	<b>B250-41600-187M1</b>	–
	63	22	18.5	300 × 250 × 150	<b>B263-41600-187N1</b>	<b>B263-41600-187M1</b>	–
	63	22	18.5	300 × 250 × 150	<b>H406-41600-187N1*</b>	<b>H406-41600-187M1*</b>	–
	63	22	18.5	400 × 300 × 155	<b>H406-41600-182N1<sup>1</sup></b>	<b>H406-41600-182M1<sup>1</sup></b>	–
	80	30	22	300 × 250 × 150	<b>H408-41600-187N1</b>	<b>H408-41600-187M1</b>	–
	80	30	22	400 × 300 × 155	<b>H408-41600-182N1<sup>1</sup></b>	<b>H408-41600-182M1<sup>1</sup></b>	–
	100	37	30	300 × 250 × 150	<b>H410-41600-187N1</b>	<b>H410-41600-187M1</b>	–
	100	37	30	400 × 300 × 155	<b>H410-41600-182N1<sup>1</sup></b>	<b>H410-41600-182M1<sup>1</sup></b>	–
	125	45	37	300 × 250 × 150	<b>H412-41600-187N1</b>	<b>H412-41600-187M1</b>	–
	125	45	37	400 × 300 × 155	<b>H412-41600-182N1<sup>1</sup></b>	<b>H412-41600-182M1<sup>1</sup></b>	–

Rated data (IEC 60947)			Enclosure dimension (H × W × D) (mm)	Padlock device H-handle silver/black
Operat. current I <sub>e</sub>	Operational power (at 380–440 V)			 IP66
AC-21A (A)	AC-23A (kW)	AC-3 (kW)		Order code number
160	75	45	500 × 400 × 300	<b>K616-41600-187H1<sup>1</sup></b>
315	132	55	600 × 400 × 300	<b>K830-41600-187H1<sup>1</sup></b>
315	132	55	800 × 400 × 300	<b>K830-41600-287H1<sup>1</sup></b>

\* larger terminal capacity, see page 154




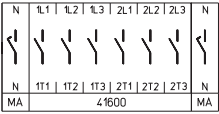
<sup>1</sup> hinged door

Further switching programmes from page 132.

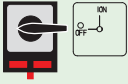
# Disconnect Switches



## Main Switches Enclosed Switches – Mild Steel Enclosure

Switching programme	Rated data (IEC 60947)			Enclosure dimension (H × W × D) (mm)	Padlock device N-handle black	Padlock device M-handle black	Padlockable handle V-handle silver/black
	Operat. current I <sub>e</sub>	Operational power (at 380–440 V)					
	AC-21A (A)	AC-23A (kW)	AC-3 (kW)		IP66	IP66	IP66
					Order code number	Order code number	Order code number
<b>41800</b> – 8 pole – without auxiliary contacts – 2 neutral contacts early make/late break  	20	5.5	3.7	200 × 150 × 120	<b>H216-41800-187N1</b>	<b>H216-41800-187M1</b>	<b>H216-41800-187V1</b>
	25	7.5	5.5	200 × 150 × 120	<b>H220-41800-187N1</b>	<b>H220-41800-187M1</b>	<b>H220-41800-187V1</b>
	32	11	7.5	200 × 150 × 120	<b>H226-41800-187N1</b>	<b>H226-41800-187M1</b>	<b>H226-41800-187V1</b>
	40	15	11	200 × 150 × 120	<b>H233-41800-187N1</b>	<b>H233-41800-187M1</b>	<b>H233-41800-187V1</b>
	40	15	11	300 × 250 × 150	<b>B240-41800-187N1</b>	<b>B240-41800-187M1</b>	–
	50	18.5	15	300 × 250 × 150	<b>B250-41800-187N1</b>	<b>B250-41800-187M1</b>	–
	63	22	18.5	300 × 250 × 150	<b>B263-41800-187N1</b>	<b>B263-41800-187M1</b>	–
	63	22	18.5	300 × 250 × 150	<b>H406-41800-187N1*</b>	<b>H406-41800-187M1*</b>	–
	63	22	18.5	400 × 300 × 155	<b>H406-41800-182N1<sup>1</sup></b>	<b>H406-41800-182M1<sup>1</sup></b>	–
	80	30	22	300 × 250 × 150	<b>H408-41800-187N1</b>	<b>H408-41800-187M1</b>	–
	80	30	22	400 × 300 × 155	<b>H408-41800-182N1<sup>1</sup></b>	<b>H408-41800-182M1<sup>1</sup></b>	–
	100	37	30	300 × 250 × 150	<b>H410-41800-187N1</b>	<b>H410-41800-187M1</b>	–
	100	37	30	400 × 300 × 155	<b>H410-41800-182N1<sup>1</sup></b>	<b>H410-41800-182M1<sup>1</sup></b>	–
	125	45	37	300 × 250 × 150	<b>H412-41800-187N1</b>	<b>H412-41800-187M1</b>	–
	125	45	37	400 × 300 × 155	<b>H412-41800-182N1<sup>1</sup></b>	<b>H412-41800-182M1<sup>1</sup></b>	–

Rated data (IEC 60947)			Enclosure dimension (H × W × D) (mm)	Padlock device H-handle silver/black
Operat. current I <sub>e</sub>	Operational power (at 380–440 V)			
AC-21A (A)	AC-23A (kW)	AC-3 (kW)		IP66
				Order code number
160	75	45	500 × 400 × 300	<b>K616-41800-187H1<sup>1</sup></b>
315	132	55	600 × 400 × 300	<b>K830-41800-187H1<sup>1</sup></b>
315	132	55	800 × 400 × 300	<b>K830-41800-287H1<sup>1</sup></b>

\* larger terminal capacity, see page 154

<sup>1</sup> hinged door

Further switching programmes from page 132.

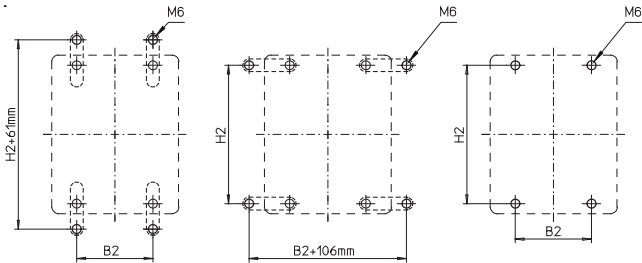
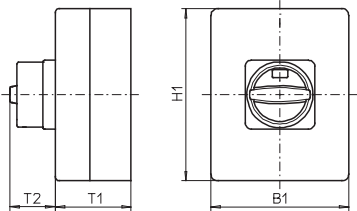
# Disconnect Switches

## Main Switches Enclosed Switches – Mild Steel Enclosure

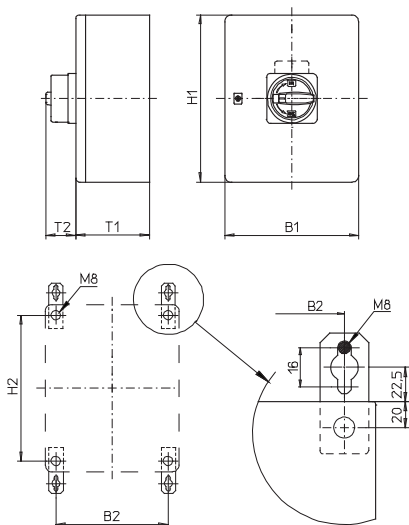
Dimensions in mm:

**Setup of order code number**

Type	Switching progr.	Mtg. form
H216	41400	087M1
Order code no.	<b>H216-41400-087M1</b>	



Please order mounting brackets separately, see page 148.



Please order mounting brackets separately, see page 148.

Mild steel enclosure **150 × 150 × 120 mm / 200 × 150 × 120 mm / 300 × 250 × 150 mm:**

Types H216 / H220 / H226 / H233:

Mtg. form	H1	B1	T1	T2	H2	B2
087M1	150	150	120	38	132	85
087N1	150	150	120	33	132	85
087V1	150	150	120	39	132	85
187M1	200	150	120	38	182	85
187N1	200	150	120	33	182	85
187V1	200	150	120	39	182	85

Types B240 / B250 / B263:

Mtg. form	H1	B1	T1	T2	H2	B2
087M1	200	150	120	38	182	85
087N1	200	150	120	33	182	85
087V1	200	150	120	39	182	85
187M1	300	250	150	50	282	185
187N1	300	250	150	45	282	185

Types H406 / H408 / H410 / H412:

Mtg. form	H1	B1	T1	T2	H2	B2
187M1	300	250	150	50	282	185
187N1	300	250	150	45	282	185
987M1	200	150	120	50	182	85
987N1	200	150	120	45	182	85

Mild steel enclosure **400 × 300 × 155 mm:**

Types H406 / H408 / H410 / H412:

Mtg. form	H1	B1	T1	T2	H2	B2
182M1	400	300	155	50	360	260
182N1	400	300	155	45	360	260

Gland plate at the bottom

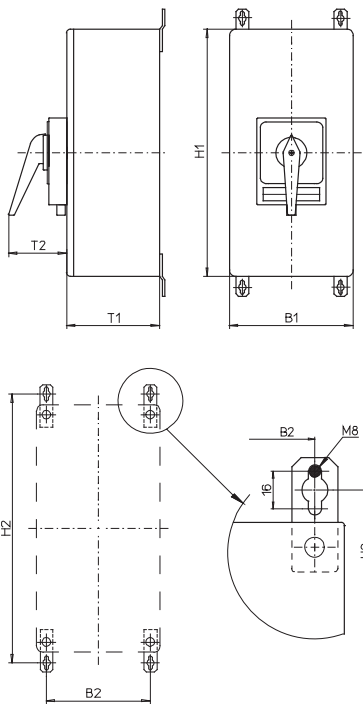
# Disconnect Switches

Main Switches Enclosed Switches – Mild Steel Enclosure

Dimensions in mm:

### Setup of order code number

Type	Switching progr.	Mtg. form
K616	41300	187H1
Order code no.	<b>K616-41300-187H1</b>	



Mounting brackets are included.

Mild steel enclosure **500 × 400 × 300 mm / 600 × 400 × 300 mm / 800 × 400 × 300 mm:**

Type K616:

Mtg. form	H1	B1	T1	T2	H2	B2
187H1	500	400	300	83	545	360

Type K830:

Mtg. form	H1	B1	T1	T2	H2	B2
187H1	600	400	300	93	645	360
287H1	800	400	300	93	845	360

Further switching programmes and corresponding dimensions for types K on request.

Gland plate at the bottom